

Sculptural Work

3D Artworks

Marcin Bernard Biesek



'Extending Hands'

Bronze

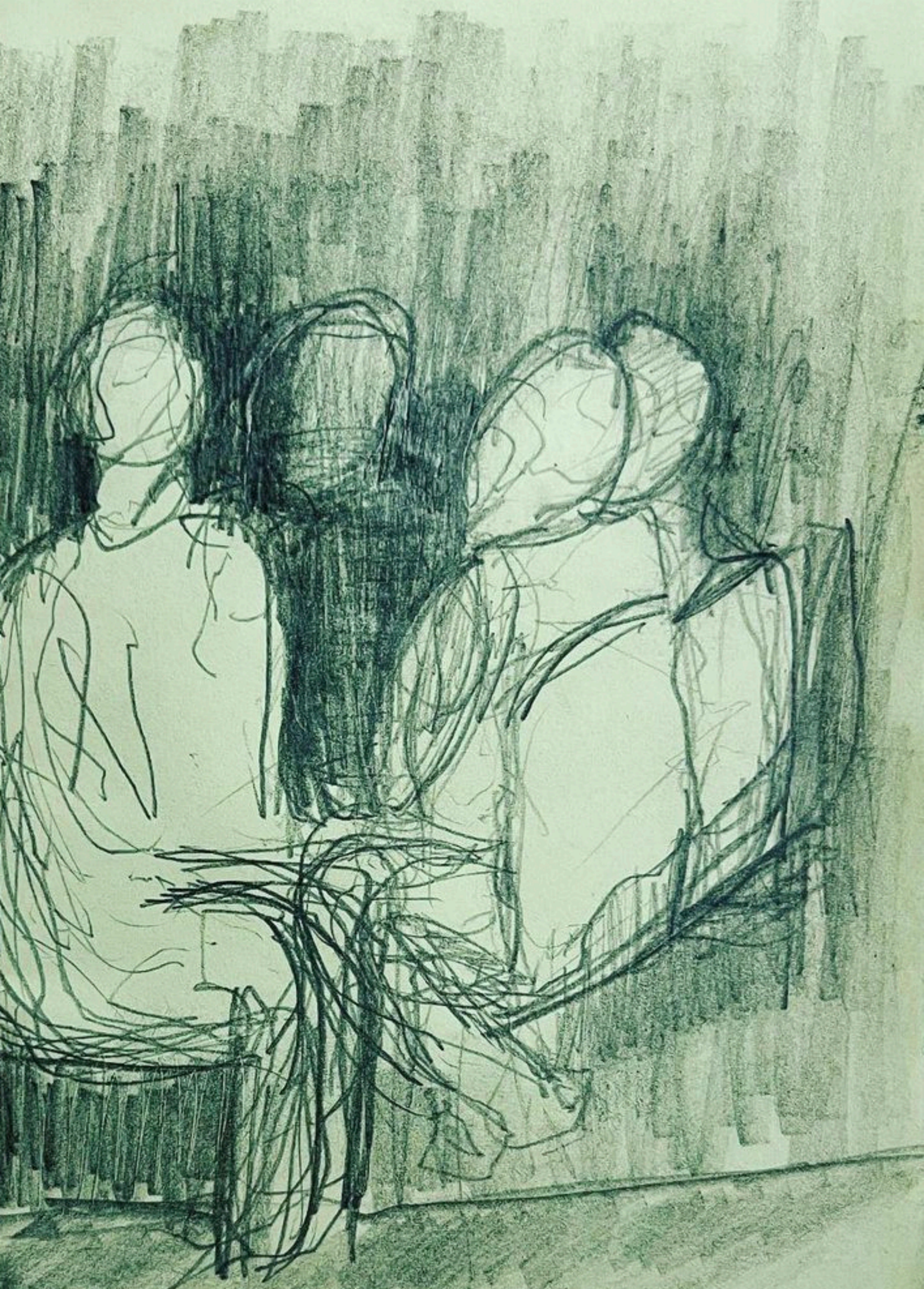
size : 1.8m x 1.8m x 1.8m

base : 1.3m x 1.3m x 0.1m



Sculpture will be placed on the base and base also is made out of bronze. It is cast together as one with the sculpture.



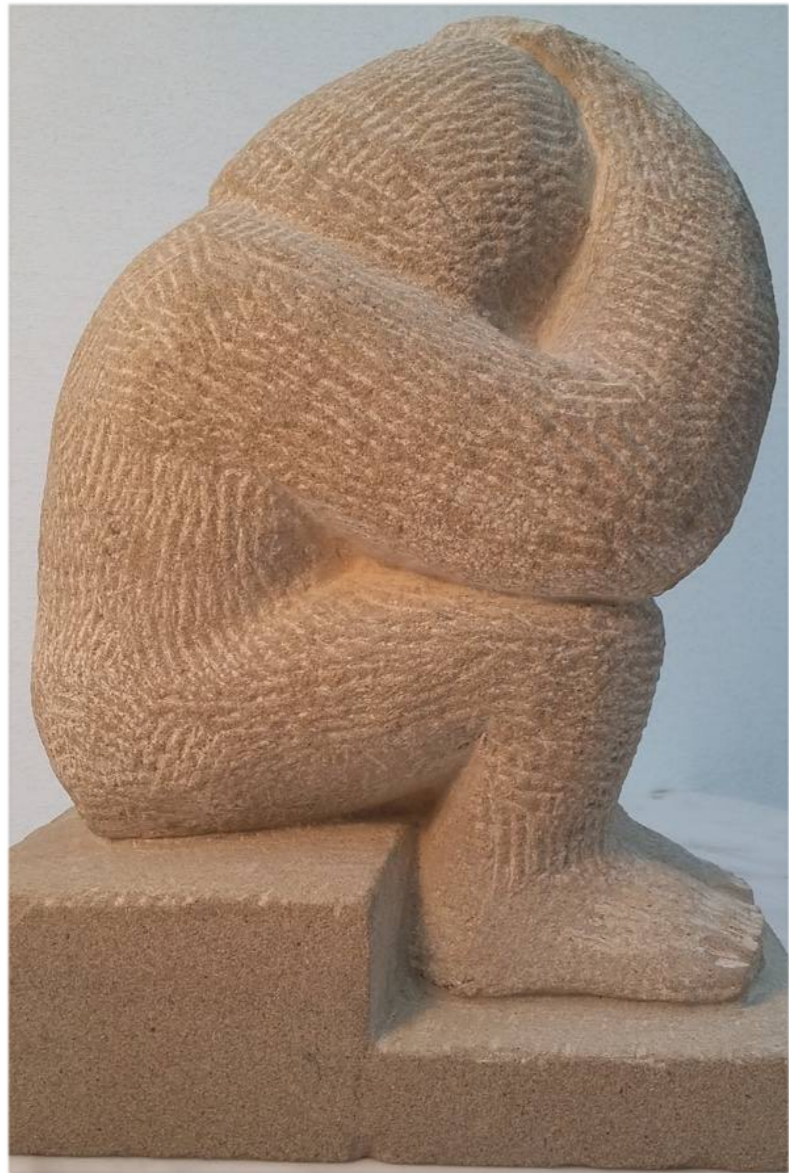


Marcin Biesek
'23





MB'22



Title: The Obese Thinker
Medium: Yorkstone
Size: 20.3Hx15.2Wx10.2D(cm)
Year: 2017

Description:

Sculpture represents our fragile society and culture. Soft stone allowed me to focus on textures, light and shadow. I did not focus on details or proportion, as I was sculpting inspired by Aztec sculptures, usually carved with simplicity and deep meaning.



Title: Gordon

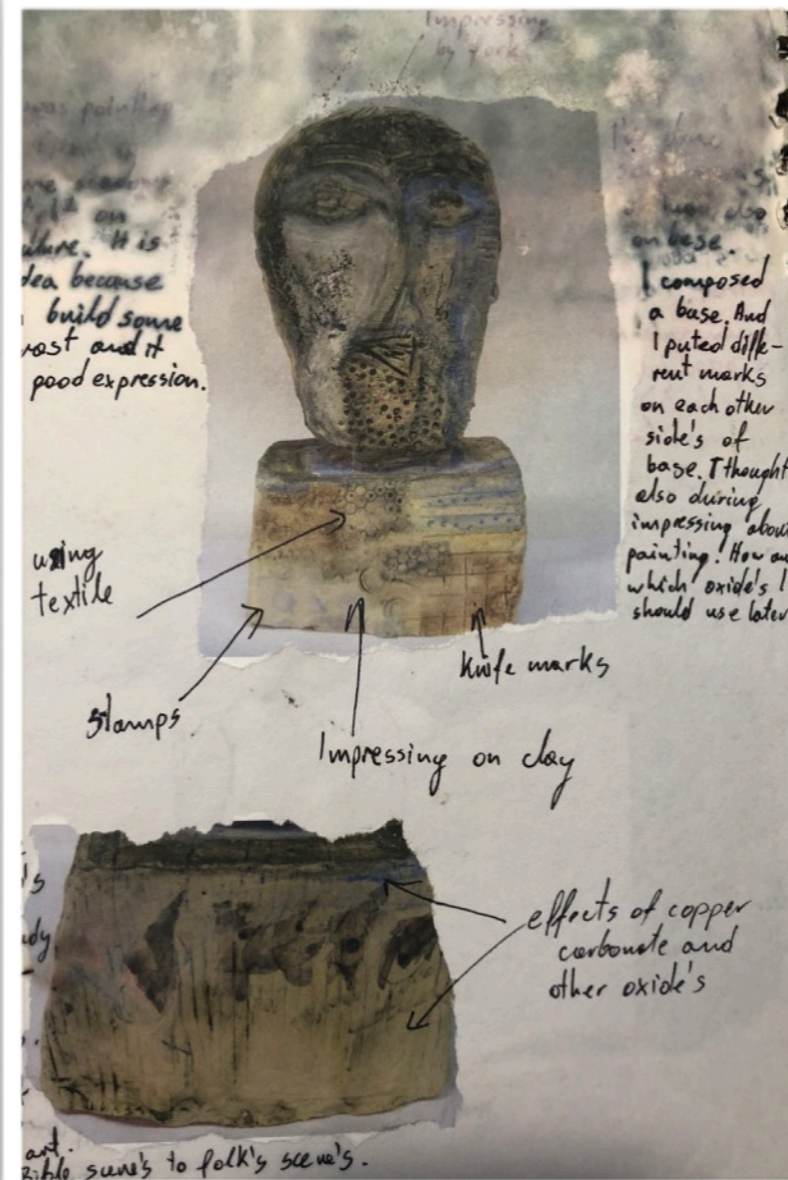
Medium: Limestone

Size: 70Hx25Wx25D(cm)

Year: 2018

Description:

Memorial abstract sculpture inspired by British Modernism.



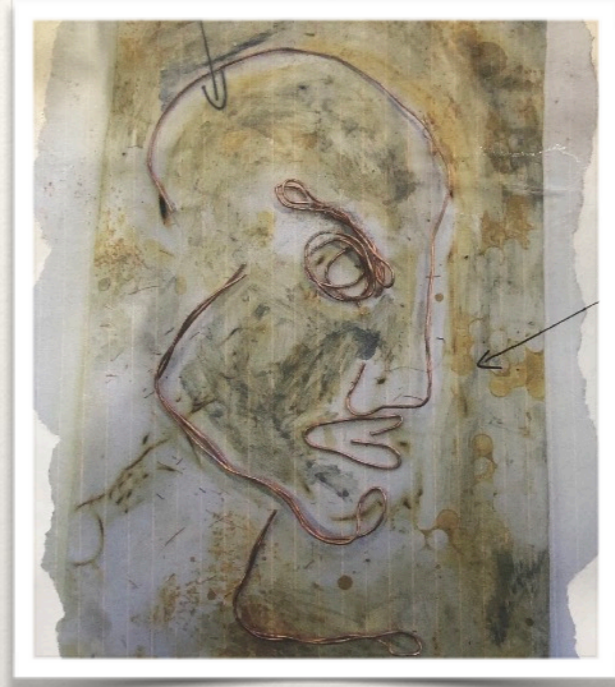
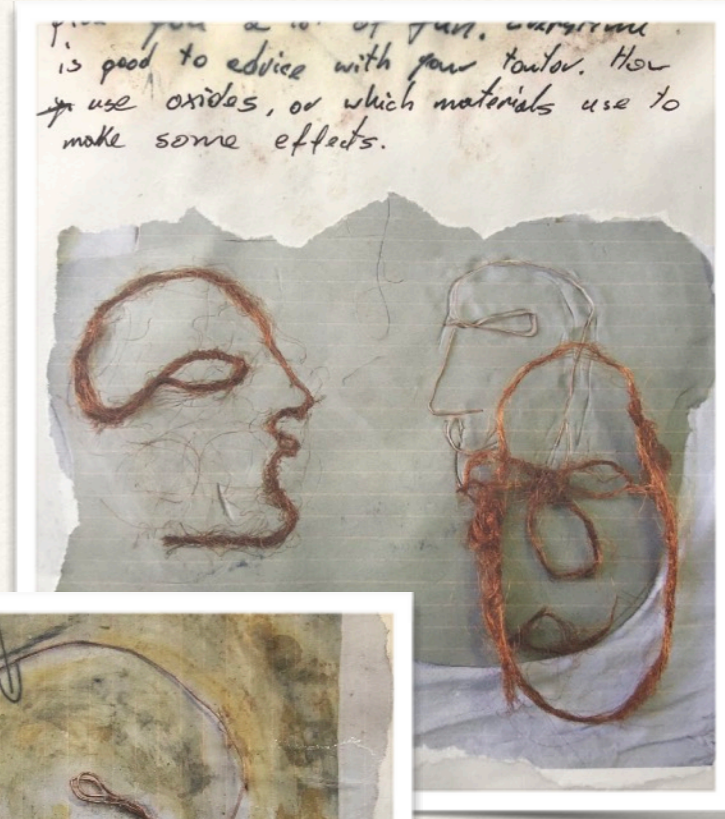
Title: Head Full of Life
Medium: Ceramic
Size: 30Hx15Wx10D(cm)
Year: 2011

Description:

Inspired by the paintings of Pat Douthwaite, Peter Howson and Leon Kossoff, each of these portraits I created present the human condition (specifically brokenness) . They represent survival, emotions and anxiety of values. The artists' works inspired the facial expression and line decoration of my sculpture. Ceramic techniques gave me possibilities to create and connect with the Ferens Gallery collection . These are literally drawings in clay.

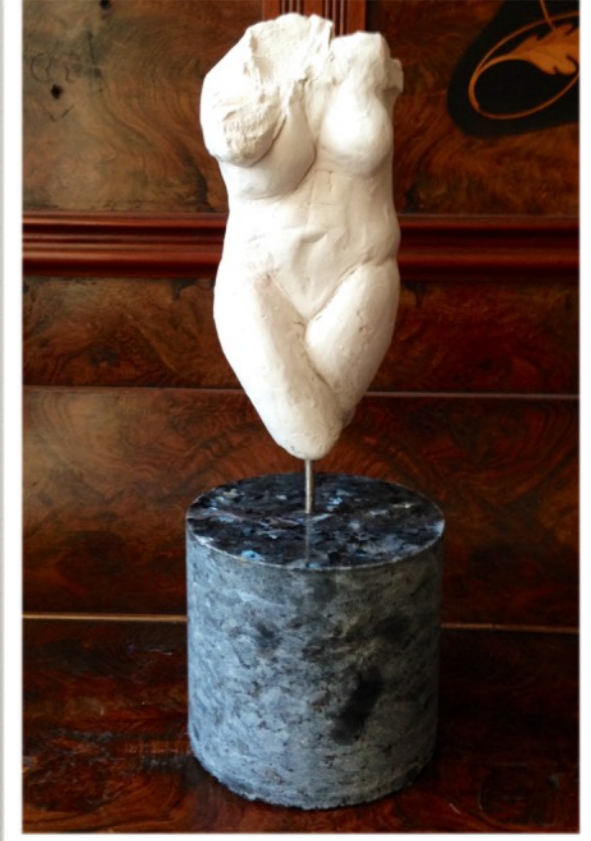
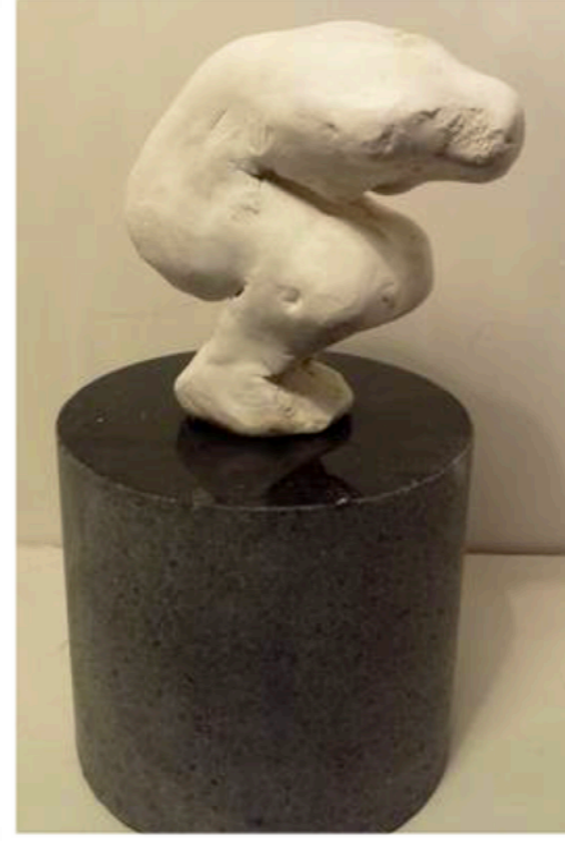






Title: Interactive Portraits II
Medium: Saggar Firing on Ceramics
Size: Odd sizes
Year: 2011

Description:
Series of Saggar Fired ceramic bisque with study of the facial expression, inspired by Art Brut Movement and artists such as Jean Dubuffet, Leon Kossoff, Henri Matisse and Pablo Picasso drawings.



Title: Broken Bodies
Medium: Ceramic on Stone
Size: 20.3Hx7.6Wx7.6D(cm)
Year: 2016

Description:

"Broken bodies" is a series of small ceramic fragile figures. It is a conclusion of our reality, in present stage. Terrorist attacks and wars leave behind only tears and broken bodies. Broken physically or emotionally, outcomes of unpredictable violence. Just like how thousands of years old artefacts can be easily destroyed within one minute; the same with people of any era can be broken and easily erased.



Title: Mapping the City (Sculptural Shadow Installation)

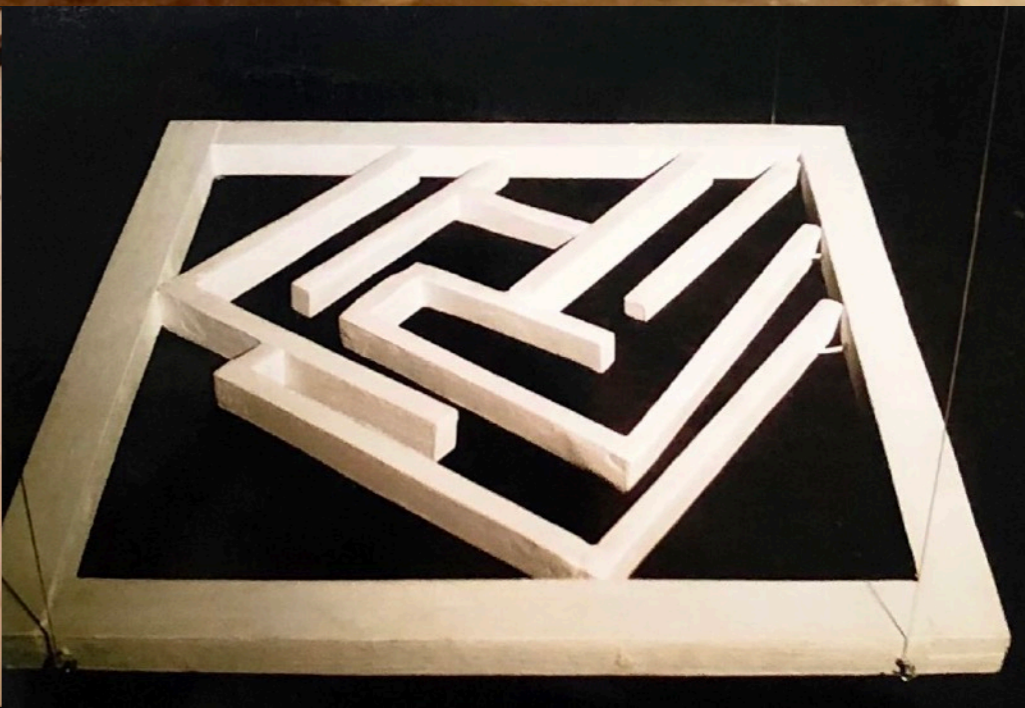
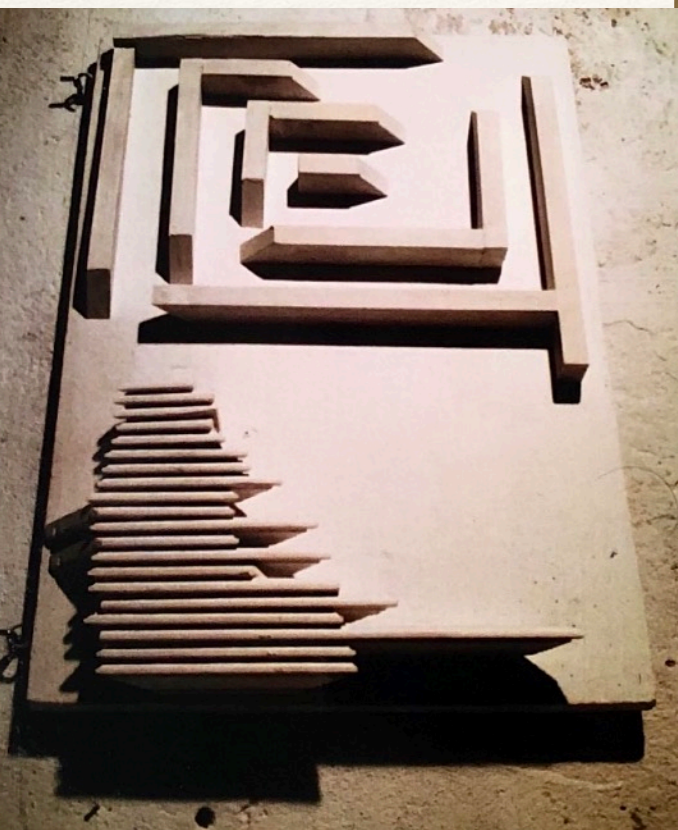
Medium: Wood

Year: 2005

Description:

This installation is an abstract interpretation of the city. Each wooden, geometric, painted white unit was hung in the room. Some were fitted directly on wall with a play of lights, creating more visual effects on the wall.

Title: Mapping the City
(Sculptural Shadow Installation)
Medium: Wood
Year: 2005







Title: Non-finite

Medium: Marble

Size: 10.2Hx22.9Wx6.4D(cm)

Year: 2012

Description:

This sculpture was inspired by the “Reclining Nude” painting made by Amedeo Modigliani whose artwork was very provocative in 1917. Unlike depictions of Venus from the Renaissance to the nineteenth century, in which female nudity is couched in mythology or allegory, Modigliani provocatively presents his Reclining Nude without any such context, highlighting the painting’s eroticism.





Title: Non-finito

Medium: Marble

Size: 8.9Hx25.4Wx5.1D(cm)

Year: 2011

Description:

Sculpture purposely unfinished. The figure appears just to show the contrast between rough, natural part of the stone and part made by stone carving activity. Sculptor reveals hidden figure or object in the stone.





<https://marcinbiesek.com>







1. Nos
2. -kološci
3. Round neck





Title: Intimacy, Extension, Venus
Medium: Marble, Onxy, Marble
Year: 2011-2019

Description:

The sculpture Intimacy brings lost definition and meaning of love. In the world of cyber relationship there is no longer space for true sacrifice and intimacy. Artwork extension was inspired by the Chinese ancient Terracotta horses and Lascaux Cave. The sculpture Venus was inspired by painting The Birth of Venus by Italian artist Sandro Botticelli.



Title: Contemporary Geometric Forms
Medium: Wood
Size: 25Hx35Wx20D(cm)
Year: 2019

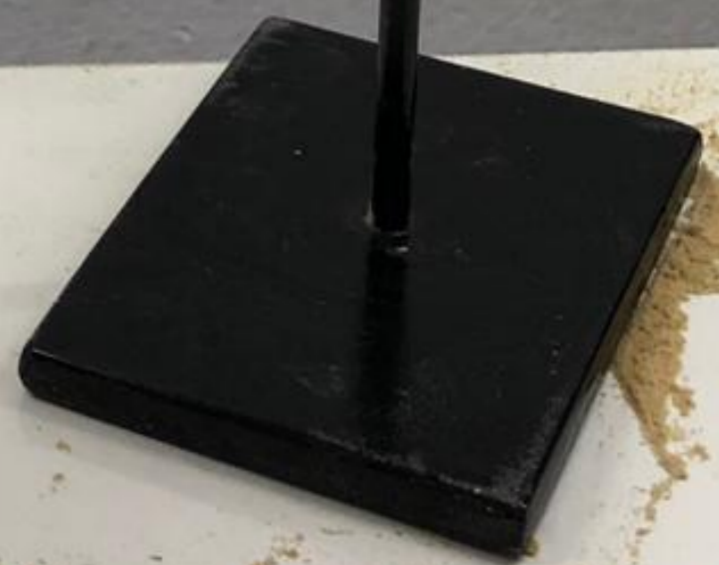
Description:
Geometric forms were inspired by nature and sculptor Barbara Hepworth .































"GDYBY NIE, WSPANIAŁE POLSKIE DYWIZJONY
I ICH NIEDOSCIĞŁE MĘSTWO, NIE ZARYZYKOWAŁBYM
TWIERDZENIA, ŻE WYNIK TEJ BITWY BYŁBY TAKI SAM."



PER ARDUA AD ASTRA

"HAD IT NOT BEEN FOR
THE MAGNIFICENT MATERIAL
CONTRIBUTED
BY THE POLISH SQUADRONS
AND THEIR UNSURPASSED
GALLANTRY,
I HESITATE TO SAY
THAT THE OUTCOME
OF THE BATTLE
WOULD HAVE BEEN THE SAME"

AIR MARSHALL SIR HUGH DOWDING
COMMANDER IN CHIEF OF FIGHTER COMMAND



Flanders

In Flanders fields
the poppies blow
Between the crosses,
row on row
That mark our place,
and in the sky
The larks, still
bravely singing, fly
Scarce heard amid
the guns below

John McCrae







DO NOT WORK UNDERNEATH

















Where

are

you

Alice?

